



SP106 Manual

CONTENT

General information.....	1
Product description.....	2
System description	3
Installation.....	3
Packing list.....	4

General information

1 About this manual

This manual book describes the installation, functions and operation rules of our pump station series for solar water heating control system. When install with other applications on this system, such as solar collector, and storage, please follow the instruction of correlative suppliers. The installation, electrical connection, adjustment and maintenance should be carried out by a qualified specialist.

2 Safety rules

- The product can't be installed in the room where easily inflammable and explosive mixtures (e.g. gas or oil) are present or may occur.
- The product can't be installed in the location which exceeds its allowable environment condition.
- The operation should be carried out by a qualified specialist.
- Before connecting the electrical wire, make sure that the power supply matches the required parameter.

3 Liability waivers

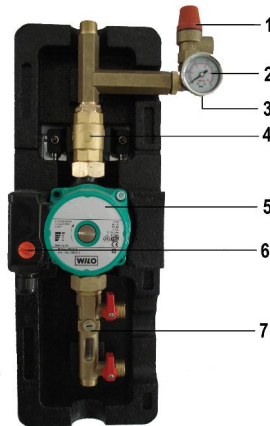
- Improper installation or operation can cause damages to material and persons. The manufacturer cannot monitor the compliance with these instructions or the circumstances and methods used for installation, operation, utilization and maintenance of this device. Damage by mishandling or improper installation on customer site is immediately leading to warranty exclusion.
- As faults can never be excluded, we don't offer a guarantee for the completeness of the drawings and texts of this manual, they only represent some examples. They can only be used on own risk. No liability is assumed for incorrect, incomplete or false information and the resulting damages.
- The manufacturer preserves the right to put changes to product, technical data or installation and operation instructions without prior notice.

4 Equip the controller

- The product is suggested to equip our SP series controllers. This manual takes SP24 as example.

Product description

1 Components



NO.	Component	Function description
1	Safety valve	Keep the system pressure in a safe state
2	Pressure gauge	Display the current system pressure
3	Expansion vessel connector	Connect the expansion vessel
4	Non-return valve	Avoid the medium flow back
5	WILO pump	WILO Star RS 15/6、RS25/6 Control the temperature difference circulation
6	Pump speed adjust switch	Adjust the pump speed with three levels
7	Flow-filling combined valve	Adjust to balance the flow rate; Fill or vent the medium

2 Main technical data

- u Dimension: 463×165×113mm
- u System design pressure: 1 MPa
- u Safety valve respond pressure: 0.6 MPa
- u WILO pump model: RS15/6、RS25/6 (For selection)
- u Screw coupling: 1/2"
- u Material: Brass
- u Thermal insulation material: EPP
- u Range of environment temperature: -10 ~ 50
- u Water protection grade: P40

System description



Installation

1. Open the package carton and take out the work station carefully.
2. Determine the mounting position of the work station, considering the mounting place for expansion vessel.
3. Drill the holes for dowels, put the dowels into the holes, fixed the work station on the wall using fastening screws.

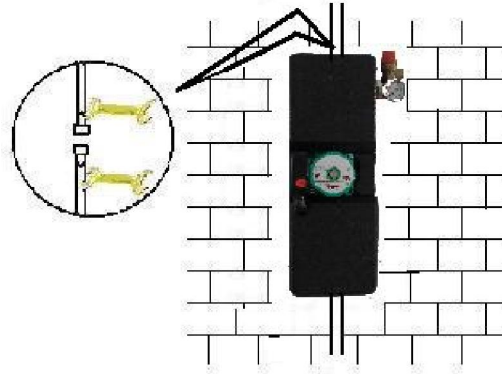
Note: The station must be vertically installed. The following are the fault locations.



4. The installation of controller is as following steps.



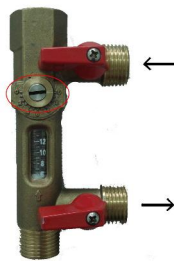
5. Use two wrenches to connect the pipes. See picture.



6. The instruction of Flow-filling combined valve

Note: When filling the medium, open the switches to the location as the picture 1. Fill the medium from the top switch till the medium vents from the base switch.

Then if you want to reach a certain pressure for the system, close the base switch. When the pressure has reached the desired valve on the pressure gauge, close the upper switch, and twist the screw to the vertical location by a twister. The whole process is finished.



1



2

Packing list

No.	Item	Specification	Quantity
1	Main part	463x 165x 113mm	1 pc
2	Fixed screw		1 bag
3	Manual		1 pc
4	Controller	(Selection)	1 pc